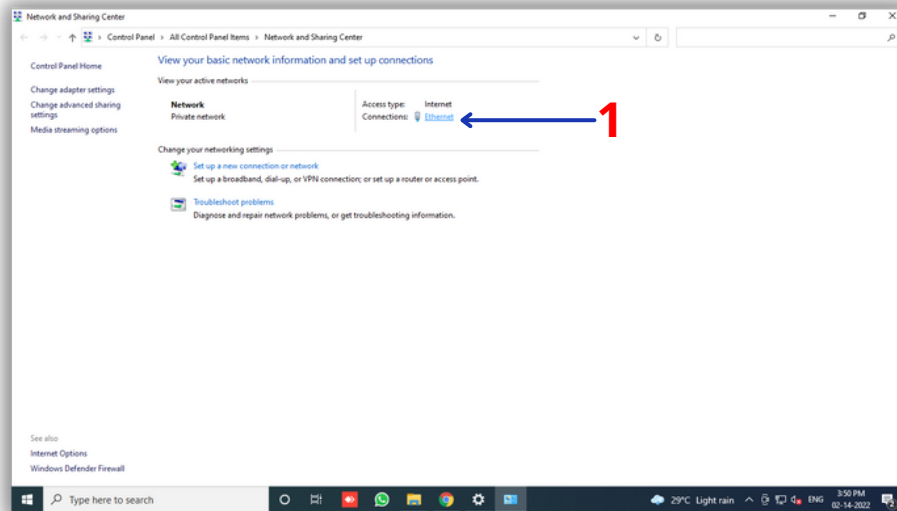


How To Change Dynamic IP to Static IP Address

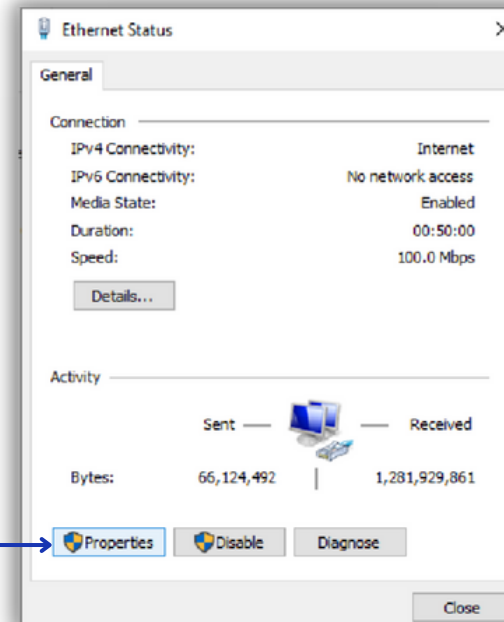
How to Change Dynamic IP to Static IP

Step1: Change IP Address In Control Panel

Control Panel->All Control Panel Items->Network And Sharing Center



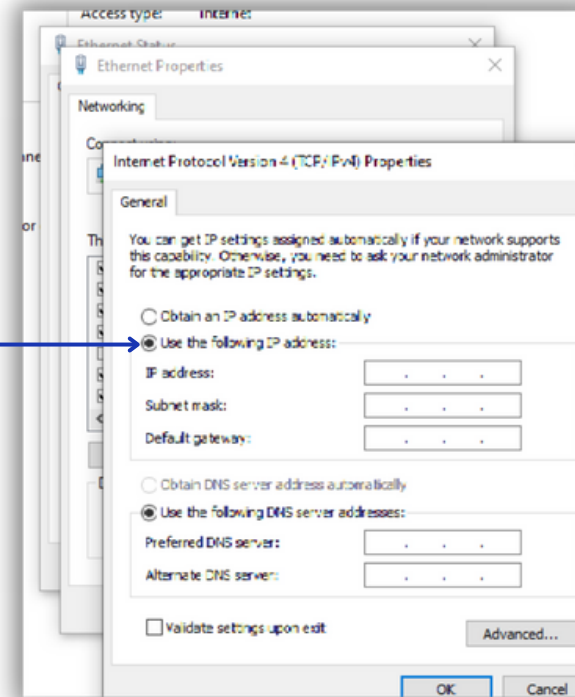
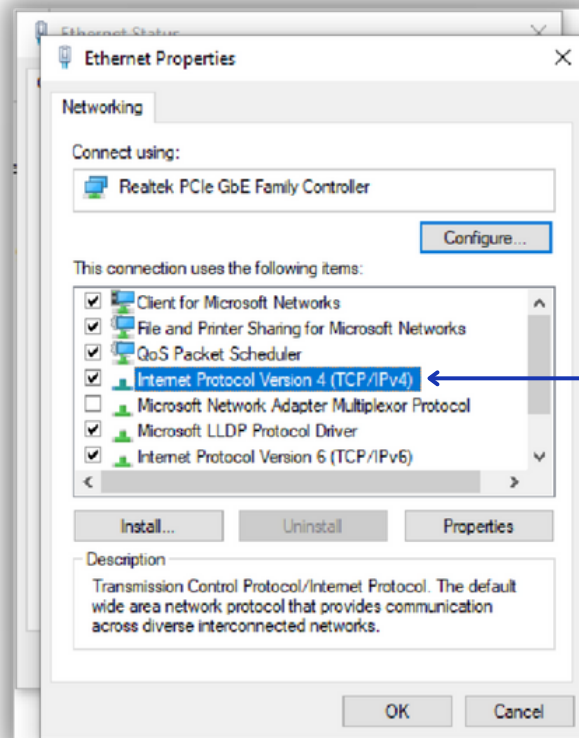
2



1 —> Double Click Ethernet

2 —> Click Properties

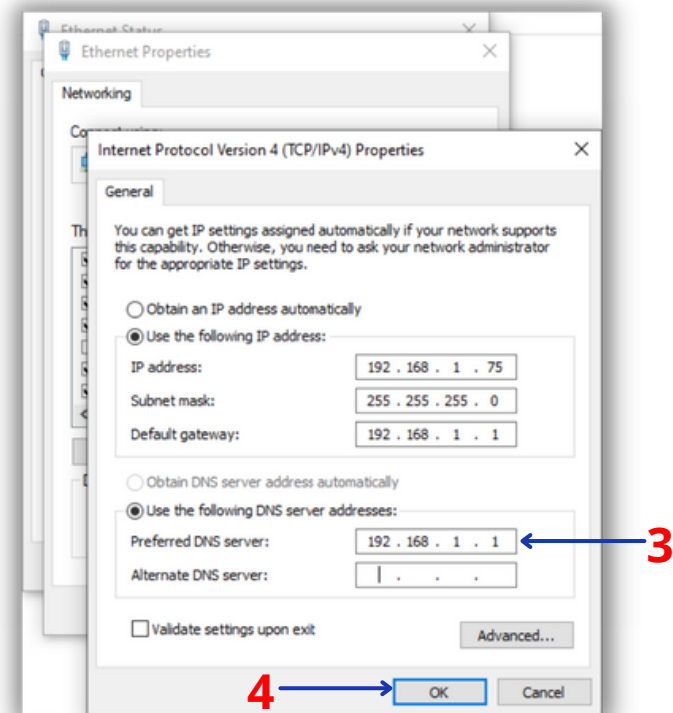
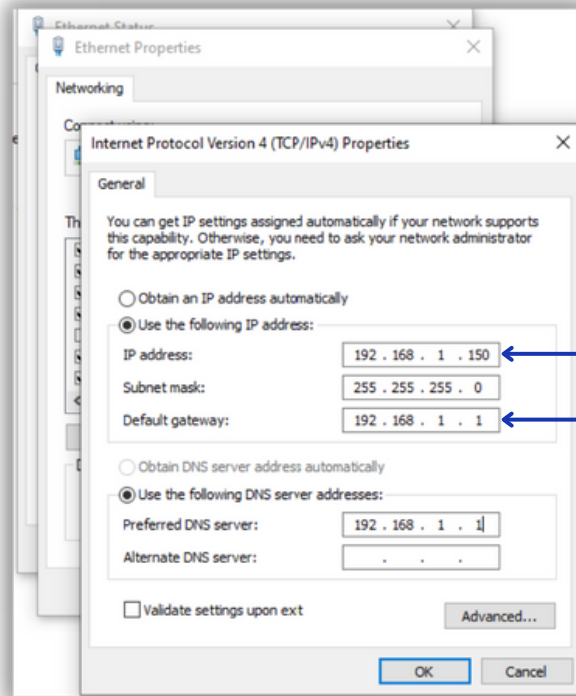
How to Change Dynamic IP to Static IP



1 → **Double Click in Internet Protocol Version 4 (TCP/IPv4)**

2 → **Click Use The Following IP Address**

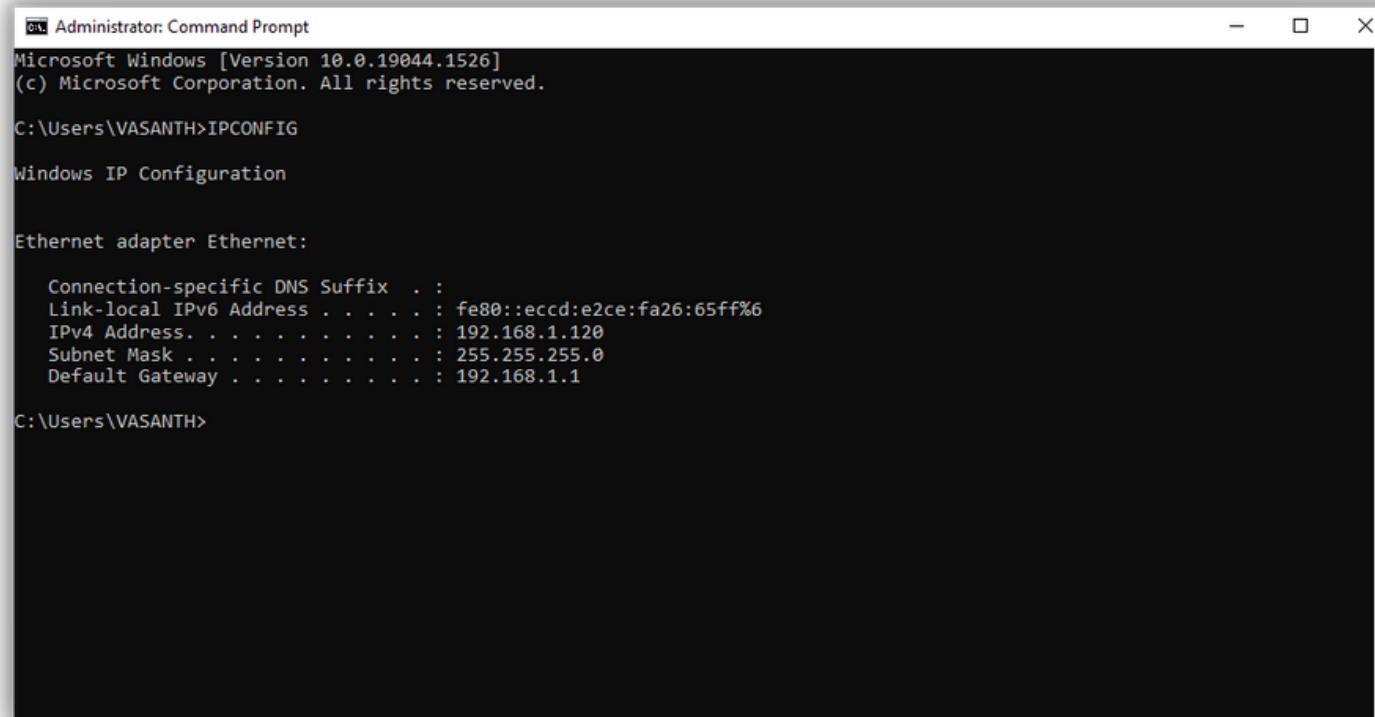
How to Change Dynamic IP to Static IP



- 1 → Enter The IP Address You Want To Set
- 2 → Enter The Default Gateway
- 3 → Enter The Preferred DNS Server
- 4 → Click Ok

How to Change Dynamic IP to Static IP

Step2:Now Check In CMD IP Address Chnaged or Not

A screenshot of a Windows Command Prompt window titled "Administrator: Command Prompt". The window shows the output of the "IPCONFIG" command. The text displayed is: "Microsoft Windows [Version 10.0.19044.1526] (c) Microsoft Corporation. All rights reserved. C:\Users\VASANTH>IPCONFIG Windows IP Configuration Ethernet adapter Ethernet: Connection-specific DNS Suffix . : Link-local IPv6 Address : fe80::eccd:e2ce:fa26:65ff%6 IPv4 Address. : 192.168.1.120 Subnet Mask : 255.255.255.0 Default Gateway : 192.168.1.1 C:\Users\VASANTH>".

```
Administrator: Command Prompt
Microsoft Windows [Version 10.0.19044.1526]
(c) Microsoft Corporation. All rights reserved.

C:\Users\VASANTH>IPCONFIG

Windows IP Configuration

Ethernet adapter Ethernet:

    Connection-specific DNS Suffix  . : 
    Link-local IPv6 Address . . . . . : fe80::eccd:e2ce:fa26:65ff%6
    IPv4 Address. . . . . : 192.168.1.120
    Subnet Mask . . . . . : 255.255.255.0
    Default Gateway . . . . . : 192.168.1.1

C:\Users\VASANTH>
```

Type "IPCONFIG" in CMD prompt and give enter. When It Shows the changed IP Address, the Static IP Address setting process is completed successfully.